



Missouri ENA State Executive Council
President: Helen Sandkuhl
President Elect: Tony Mitchell
Immediate Past President: Joan Eberhardt
Secretary: Lori Davis
Treasurer: JoAnn Coogan

Missouri ENA
 Lori Davis
 PO Box 1354
 Warsaw, Mo 65355

NONPROFIT ORG.
 U.S. POSTAGE
 PAID
 WARSAW, MO 65355
 PERMIT NO. 100507

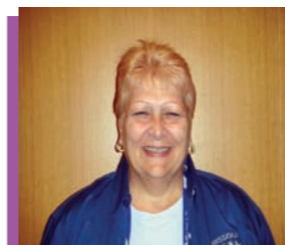
THE CENTRAL LINE

WWW.MISSOURIENA.ORG

Missouri Emergency Nurses Association Fall 2010 Volume 32

Message from Missouri State ENA Council President

Helen Sandkuhl, RN MSN CEN TNS FAEN



ENA State President
 Helen Sandkuhl, RN,
 MSN, CEN, TNS,
 FAEN

The Missouri State Council is very proud to report that we were represented at the ENA National Assembly in San Antonio by 16 great delegates from the Show-Me State. The General Assembly is the decision making body of our organization. ENA is a member owned and run organization that represents emergency nurses in the United States and abroad. The hearing agenda for this year's assembly contained many ByLaws and Resolutions. ByLaws need a 2/3 majority vote to pass as where a resolution only needs a simple majority. Here is a breakdown of the following items that were discussed and voted upon at our recent meeting in September:

ByLaw Proposals:

GA10-004 Past due President's Waiver.	Passed
GA10-005 General Assembly International Delegates.	Passed
GA10-006 Board Advisory Member.	Failed
GA10-008 Resignation-Discipline Termination.	Failed

Resolution Proposals:

GA10-009 National Candidate Publicity & Campaigning Policy.	Passed
GA10-010 Helicopter Shopping.	Passed
GA10-011 Safe & Effective Management of Pain.	Passed
GA10-012 Supporting Criminal Penalties for Assault.	Passed
GA10-013 ENA Position on Firearm Legislation.	Passed

Anyone interested in finding out more details of the above ByLaws and Proposals can do so by accessing www.ena.org. Before closing, I would like to congratulate all of the members of our Membership Committee. Missouri has the largest membership in history with over 800 current members statewide.

Thanks for all your time and hard work.



Delegates : Larry Faulkner, Jeanne Fogarty, Joan Eberhardt, Tony Mitchell, Sharon Trumble, Gordon Rogers, Pat Clutter, Chris Hoag-Apel, Helen Sandkuhl, Lori Davis, Teresa Coyne, Gail Carroll, Carol Pettet, Jami Blackwell, Cheryl Phillips, JoAnn Coogan (not pictured- Ginny Myerscough)

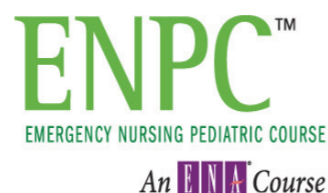
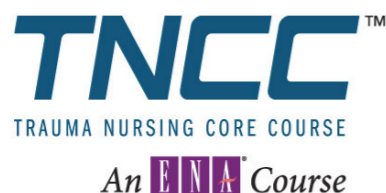


COURSE OPERATIONS COMMITTEE

by Chris Hoag-Apel, Chairperson

I was given the opportunity to attend the ENA National Convention as a delegate in San Antonio in September. Prior to the Assembly, I attended the ENA Board of Directors Meeting in which course operations was a topic. Following this meeting, I felt it was appropriate to go over the responsibilities of the Course Director for TNCC/ENPC courses.

1. The course director is responsible for ensuring that these courses are conducted in accordance with all administrative procedures.
2. The course director must be a member of ENA with a current unrestricted RN license. He/she must have successfully completed both the provider and instructor course before acting as a course director.
3. The course director is responsible to ensure the security of the test.
4. The course director is responsible for all course fees.



Precourse Activities:

1. Send a completed application form to the national ENA office at least 8 weeks prior to course.
2. Identify course site, dates, participants, and instructors.
3. Send manuals to the participants at least 30 days prior to the course. These manuals are paid for in advance. Confirm receipt of registration fees received before distributing manuals, dependent on the organization you work with.
4. Print and disseminate course schedule and prepare verification cards
5. Assign instructors lectures and psychomotor skill stations.
6. It is recommended that the participant-to-instructor ratio for psychomotor skill stations be 4:1. The maximum participant-to-instructor ratio may not exceed 6:1. If the ratio is extended from 4:1 to 6:1, the skill station must be lengthened to allow a minimum of 15 minutes per participant per station.
7. Arrange for availability of equipment.
8. Arrange breaks and meal support as needed.

Day of the Course Activities:

1. Course Director maintain in-person availability during the entire course to monitor the quality of the class, assure the instructors are adhering to the course content, and time schedule.
2. Maintains/collects the following required course documents
 - a. Participant Roster
 - b. Course Evaluation/Multiple-choice Examination Sheets
 - c. All demographic information completed
 - d. Count Multiple-choice Examination Sheets to assure that all have been returned
 - e. Psychomotor Skill Station Evaluation Sheets
 - f. Summary Performance Report Form
 - g. Final Faculty Roster
 - h. Conflict of Interest Disclosure Statements
 - i. Course Contact Hour Certificates
3. Ensure the course is conducted in a professional manner and course integrity is maintained and follows the procedures and guidelines. (Continued on next page)



CHAPTER REPORTS

Kansas City Chapter

by Teresa Coyne, President

New KC Chapter Officers for 2011:

President – Kevin Myers – St. Luke’s
 President-Elect – Stephanie Droppelmann – North Kansas City
 Secretary/Treasurer – Tammy Braley – North Kansas City
 Past President – Teresa Coyne – Truman Lakewood

State delegates for 2011: Kevin Myers, Stephanie Droppelmann, Cheryl Phillips

Alternate Delegates: Faye Anne Huges & Nicki Carlton

The follow is a letter received by the Missouri State ENA Council.



August 13, 2010

To : Missouri Emergency Nurse's Association

Regarding: 2010 Emergency Nurse's Awards

The members of the Missouri Chapter of the International Association of Forensic Nurses would like to extend a special thank you to the Missouri Chapter Emergency Nurses. Many of the recipients of this year's awards were also forensic nurses and physicians. It was heart warming to see their efforts to change and strengthen the practice of caring for victims of inflicted violence in our emergency departments.

Please share this official thank you from the Missouri IAFN Chapter. Also, if our chapter can be of any service, please feel free to contact us.

Sincerely,

Kathleen Hitchcock, RN, SANE-A
 Forensic Program Coordinator
 St. Lukes Health System
 Kansas City, Missouri

President, IAFN-Mo. Chapter

(816)255-9503
kathleenh_29@hotmail.com
khitchcock@saint-lukes.org

Carolyn Cordle BSN SANE-A
 Missouri Chapter International Association Forensic Nursing
 President-Elect



CHAPTER REPORTS

Kansas City Chapter

by Teresa Coyne, President



Missouri had a total of 15 delegates & 1 alternate attend the ENA national 2010 General Assembly in San Antonio 9/21-9/23. The Kansas City Chapter had 3 voting delegates (Lori Davis, Cheryl Phillips, & Teresa Coyne) & others from Kansas City and the state of Missouri attended the 2010 Conference 9/23-9/25 in San Antonio.

We held a chapter meeting Sept. 28th at NKC with 13 in attendance. Elections for next year were held, we chose committee chairs & state delegates, set dates for next years meetings, finalized plans for our awards banquet & Emergency Nurse's Week, and began discussing strategic planning for 2011.

This year we teamed up with Truman Medical Center for our CEN Review on Oct 11 & 12. We had 42 attendees, which was a big crowd for Pat Clutter's excellent presentation to prepare our nurses to take their CEN exams!

As part of our celebration for Emergency Nurses Week this year we sent cookies to 19 of our local hospitals with a note thanking them for all they do. Our awards banquet was held in the Skyview Room Oct. 13th – Emergency Nurses Day, at North Kansas City Hospital. We had 20 nominations turned in for the 7 awards that were handed out. The winners are pictured below.



Forensic Nurse of the Year:

Carolyn Cordle, BSN, SANE-A- Program Director of COVERSA (Collection of Victims Evidence Regarding Sexual Assault)-North Kansas City Hospital ED

Rookie of the Year:

Sadie Beetsma, RN, BSN - Hedrick Medical Center

ED Support Person of the Year:

Sherry Recob, ERT/NUS/Reports Specialist – North Kansas City Hospital

EMS Personnel of the Year:

Sean Daugherty-Battaolion Chief-Gladstone Ambulance

Emergency Nurse of the Year:

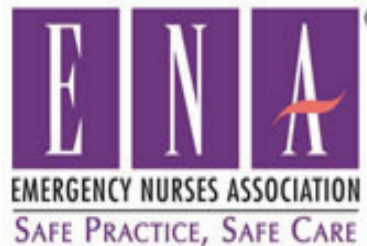
Jennifer Potter-Mann, RN, BSN, CEN – Staff/charge nurse, Truman Lakewood

Nursing Leadership of the Year:

Jacque Euritt RN, BSN – Director - Emergency Services - Research Medical Center

Nurse Educator/Mentor of the Year:

Tracy Howard, RN, BSN – Emergency Department Educator, Centerpoint Medical Center



COURSE OPERATIONS COMMITTEE

by Chris Hoag-Apel, Chairperson

Postcourse Activities: (Within 30 days of the course)

Return the following required post course materials

1. Participant Roster
2. Multiple-choice Examination Sheets
3. Course Evaluation Sheets
4. Psychomotor Skill Station Evaluation Sheets for participants who were unsuccessful
5. Summary Performance Report Form
6. Final Faculty Roster

SUBMIT CHECK FOR INDIRECT FEES, MANUALS AND OTHER CHARGES MADE PAYABLE TO ENA COURSE OPERATIONS. INCLUDE COURSE DIRECTOR'S NAME, COURSE NUMBER AND DATES OF COURSE.

ENA EXPECTS ALL FEES TO BE PAID IN FULL 30 DAYS AFTER COURSE DATE.

In the event a course director has an outstanding balance due over 120 days the course Director will be suspended from course directing and teaching ENPC/TNCC until all outstanding fees are received. In addition, the State Council President and State Course Operation Chair will be notified regarding the outstanding balance.

The Administrative procedures I have outlined have been in effect and last updated in 2008. Following the Board of Directors Meeting in San Antonio emphasize was placed on the payment of in-direct fees. Also putting teeth in the suspension of course directors who do not follow the procedures. This not only effects the course directors but also places a hold on the state quarterly assessment fees that is received for the classes taught.

A current list of course directors will be available on the ENA Missouri Website.

www.missouriena.org

GOVERNMENT AFFAIRS COMMITTEE

by Carroll Pettit, Chairperson

The Government Affairs Committee will have a very full year. At present the three initiatives we will be working on are overcrowding, violence in the workplace and clinical priorities concerning the psychiatric patient. We are interested in what your ideas would be to study.

A big positive when the Senate defeated a bill by Senator Jojanns of Nebraska which would have cut \$11 billion allocated for preventative care such as immunizations, health screenings, and the elimination of health disparities.

Some good news and some bad news from Missouri—highway deaths and motorcycle deaths are down but the use of seatbelts has dropped. Over the holiday MoDot did some extensive seatbelt checks which hopefully will remind people of the importance. The 2010 National Scorecard on Safety will be released in early November.

Finally, I want to remind everyone that the elections will be held November 2 and we all need to get out and vote.





Committee Reports

INJURY PREVENTION COMMITTEE

by Lori Davis, Injury Prevention Committee Member

The following is an excerpt of the Missouri Department of Transportation

More Missouri teens are buckling up. According to the results of the latest statewide seat belt survey, teen seat belt use is up to 66 percent from 61 percent. Unfortunately, that means 34 percent still are not wearing their seat belts and are at a greater risk to get injured or killed in traffic crashes. That's why Missouri high schools are invited to compete in the 2010 Battle of the Belt Challenge for an opportunity to win cash and prizes while increasing their school seat belt use.

“Although more Missouri teens are wearing their seat belts according to the survey, too many still are dying in car crashes because they are not buckled up,” said Leanna Depue, chair of the Missouri Coalition for Roadway Safety’s Executive Committee. “Through education, competition and fun, Battle of the Belt can make a difference with Missouri teens and save lives.”



Young drivers are overrepresented in crashes both nationwide and in Missouri. Of all 2009 Missouri traffic crashes, 24 percent involved a young driver (under age 21). Of all fatal traffic crashes, 17 percent involved a young driver. Traffic crashes are the leading cause of death for people 15-20 years old.

The statewide competition will run Oct. 4 to Nov. 19 to educate young drivers about safety belt use, reduce traffic crash injuries and save teen lives. The program consists of two surprise seat belt checks at each high school to measure student seat belt usage before and after an educational campaign on the importance of safety belt use. In addition, schools have the opportunity to submit a 30-second video spot aimed at encouraging their peers to buckle up. Statewide and regional cash prizes are awarded to schools reaching high safety belt usage rates.

The program was originally brought to southwest Missouri by the **Missouri Emergency Nurses Association** and St. John’s Hospital. In 2006, the Missouri Coalition for Roadway Safety, in conjunction with American Family Insurance, took the competition statewide and continue to sponsor this year’s program along with the Missouri College of Emergency Physicians.

More than 144 schools participated in Battle of the Belt last year. Information can be found at

[**www.saveMOLives.com**](http://www.saveMOLives.com)

MEMBERSHIP COMMITTEE

by Ginny Myerscough, Chairperson

There are 815 ENA members in the state of Missouri, as of Sept 26th, 2010. Each chapter has the following members, St. Louis 247, Kansas City 228, Ozark 172, SEMO 63, Central 55, Crescent 27, and 6 were unassigned. Letters were sent to 59 members that were expired or about to expire. We have lost our Ruby status as our membership dropped below 823. If every ENA member in the state could recruit one new member, just think how many members we would have. Beginning January 1, 2011, individual ENA memberships will be increase to \$100 instead of \$96.



CHAPTER REPORTS

St. Louis Chapter

by Joan Eberhardt, President



St. Louis ENA meets the second Tuesday of each month at Des Peres Hospital. The Chapter will celebrate Emergency Nurses Day with an awards dinner on October 13th at Orlando Gardens. Awards will be given for 11 categories including Clinical Practice, Leadership, Community Education/Service, Educator, Rookie, Forensics, Physician, EMT/Paramedic and the Emergency Nurse of the Year. In addition, the Chapter will present the Distinguished Community Service award to an individual or organization that makes special contributions to ENA and the community. This award represents the work done by a pillar in the community. Several gift baskets will be available for bid as part of the annual “silent auction” which raises money to help support educational endeavors within the Chapter.

The Chapter is actively involved in providing TNCC and ENPC classes for our emergency nursing colleagues. There was an ENPC course on October 22 & 23 and a TNCC course is scheduled for November 12 & 13, both at Des Peres Hospital. The 2011 Course Operations calendar for TNCC and ENPC has been established and registration forms will be mailed soon.

The Chapter will be will host a CEN review course in the Spring, 2011. Our guest speaker will be Jeff Solheim from Oregon. Jeff is well known for his energy and enthusiasm, and always presents informative classes. Jeff spoke at the Combined Clinical Conference in August at Tar-Tar-A and received outstanding reviews. This is good news for the many people who have been requesting the review.

The Chapter is planning several Docu-drama’s next spring and will partner with local police, fire, and EMS services to present several programs at local junior and senior high schools. The positive effect of these “don’t drink and drive” programs is continually reinforced when comparing the pre-test with the post-test responses from the students.

We are proud to report the 2009/2010 Hockey for Life fundraiser which benefited the St. Louis City EMS initiative to purchase 12-Lead ECG capabilities for their ambulances was a success! Thanks to the wonderful partnership with the St. Louis Blues Alumni, St. Louis Bandits and St. Louis University Hospital the \$50,000.00 goal was met. The check will be presented to St. Louis City EMS sometime during the next month. The St. Louis Chapter ENA gratefully acknowledges all who so generously participated.

The Chapter is now working on the 2010/2011 Hockey for Life fundraiser which has the same goal and will benefit the St. Louis Metropolitan Police Foundation’s initiative to outfit ALL St. Louis Metropolitan Police Department marked vehicles with camera systems or dash-cams.



CHAPTER REPORTS

SEMO Chapter

by Julie Dale, President



SEMO Chapter held a sponsored dinner meeting on August 9, 2010. Featured speaker was Dr. Martinique Johnson who discussed pediatric asthma care in the Emergency Department. The dinner meeting to be held on October 11, 2010 will feature speaker Dr. Kevin Vaught who will discuss Emergency Department Management of Hemorrhagic Stroke.

SEMO Chapter will be awarding a CEN and CPEN examination scholarship in October. Successful candidates are selected based on written essays explaining why they would benefit from taking the test and what their plans are as a professional nurse. TNCC class was held on September 9-10, 2010 which had 12 participants. Another class is planned for October 9-10 with 11 participants signed up so far.

SEMO Chapter members attended a Safety Fair at West Park Mall in Cape Girardeau, MO on August 7, 2010. We are pleased to report that we gave away 102 bicycle helmets at that safety fair. We have coordinated with Safe Communities for Car Seat Installation Technician training for SEMO chapter ENA members. A class is scheduled for October 27-29, 2010. Our chapter will pay \$35.00 of the \$75.00 fee for SEMO Chapter ENA members who attend this training. The class size is limited to 20 participants.

We are proud that one of our chapter members, Kristi Williams, RN, CEN, SANE, was awarded the Missouri State ENA Rookie of the Year award which she was presented at the Combined Clinical Conference. Our chapter provided a scholarship for Kristi to attend the Combined Clinical Conference so she could accept the award. Our chapter member Chad Rollins, RN, BSN, CEN presented the ENA Choices for Living program to the Fredericktown High School on September 27, 2010. The program was presented to approximately 130 students ages 15-19 in 6 sessions. This was a kick-off to Fredericktown High Schools "Save a Life Campaign."



SEMO Chapter members Julie Dale, RN, MSN, CEN, Carolyn Gerecke, RN, BSN, CEN and Chad Rollins, RN, BSN, CEN attended the ENA National Scientific Convention in San Antonio, TX on September 21-25, 2010. (Pictured above with National President, Dianne Gurney) While there, they were able to attend the Board of Directors Meeting, General Assembly, Networking Sessions on ENA's Lantern Award and Injury Prevention, classes on Caring for Critical Patient in the ED, Heat Illness, Perfecting Medication for Procedural Sedation, Laughing Gas for Pediatric Procedural Sedation, Research and Evidence Based Practice, Managing Chronic Painful Conditions in the ED setting, and Becoming a Difficult IV (DIVA) Expert, Team STEPPS Fundamentals, and Charting as a Defendant. During their time at the convention they were also able to network with several of the other Missouri ENA members who attended.



Committee Reports

COMBINED CLINICAL CONFERENCE ON EMERGENCY CARE COMMITTEE

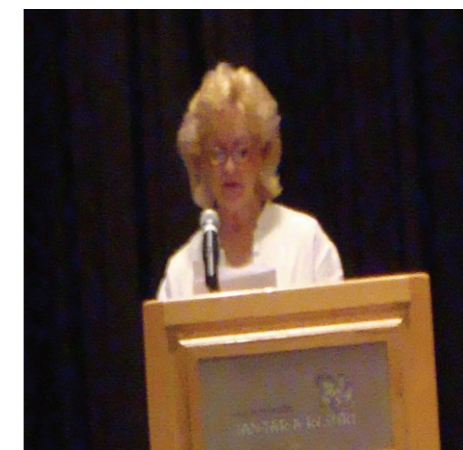
by Joan Eberhardt and Carol Pettit, Committee Chair and Co-chair

The 24th Annual Combined Clinical Conference on Emergency Care was a huge success! Nursing attendance to the CCC Increased in 2010 from the previous year by 52%! Thanks to all who attended and those who helped with the daily work of the conference and the ENA booth.



The speakers representing MOENA were absolutely outstanding! It was such an honor to have our 2011 National ENA President-elect, Ann Marie Papa (pictured above) present two sessions. And the good news is she has agreed to participate in the 2011 Combined Conference in Branson. Additional ENA members who spoke included Mary Otting, RN from Chicago Children's Hospital, Mark Thorp, RN from St. Louis and Jeff Solheim, RN (pictured above) from Oregon. Jeff was originally scheduled for two presentations, but due to some last minute glitches was able to fill in as a general session speaker as well. All of the speakers representing the ENA nursing tracts received wonderful evaluations and very positive feedback.

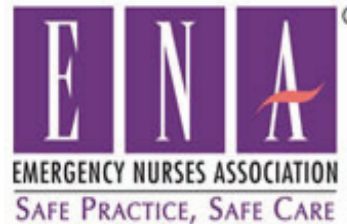
One of the great highlights for all of us was the presence of our National ENA President, Diane Gurney throughout the conference. Diane arrived the evening before the conference started and attended the whole three days. This was an all-time first and such an honor for MOENA. Diane mentioned the MOENA conference in her "Letter From The President" in the August edition of [ENA Connection](#).



Joan Eberhardt at 2010 CCC

MOENA, MOCEP and MEMSA are in the process of planning the 2011 conference in Branson. We have invited and received confirmation that Ann Marie Papa and Mary Otting will be returning next year. We are working on a forensics speaker and will share more as we move ahead. If you have any speaker recommendations, please let us know.

The Thursday evening lake cruise on the Celebration was beautiful and relaxing. We had a delicious Bandana's bar-b-q dinner and wonderful networking. It was culminated by the awards presentation and recognition. The evening was enjoyed by all!



2010 ENA Missouri State Award Winners!

Congratulations!



Pictured above from left to right:

Rebecca Hierholzer, MD - Emergency Physician of the Year
Medical Director for COVERSA - Kansas City

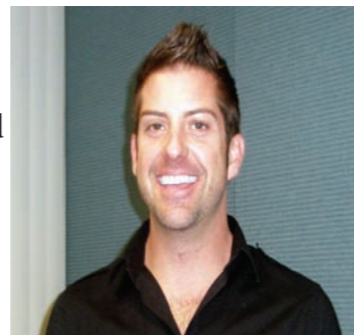
Teresa Coyne, RN, BSN, CEN - Missouri Emergency Nurse of the Year
Truman Medical Center - Kansas City

Megan Phillips, RN, CEN - Nurse Educator of the Year
Cox Health Center - Springfield

Dee Ballard, RN, SANE-A - Forensics Award of the Year
Lake Regional Medical Center - Osage Beach

Kristi Williams, RN, SANE, CEN - Rookie of the Year
Southeast Missouri Hospital - Cape Girardeau

Clay Salmon, Leadership of the Year Award
(unable to attend award ceremony)
St Luke's - Kansas City



CHAPTER REPORTS

Ozark Chapter

by Pat Clutter, Secretary

The Ozark Chapter of ENA is gearing up for our First Annual Emergency Nurses Banquet to be held on October 14, 2010 at Millie's Restaurant. At this event, several awards will be presented to area emergency nurses and personnel. We are excited about this new addition to our yearly events. We also were pleased to have our CEN Review held on October 4-5 in Springfield and are in process of making great plans for our next one day long seminar in 2011.

At the recent National Convention held in San Antonio, four of our members represented the state of Missouri at the General Assembly as delegates. We were pleased to be able to perform this vital function for our state. The state of Missouri had 16 delegates to vote on By-Law changes and Resolutions.

Ozark Chapter members, Jami Blackwell, Pat Clutter, Gail Carroll, and Larry Faulkner at ENA General Assembly in San Antonio



We were most thrilled to watch our long-time member, Gail Carroll RN, sworn in as a member of the national nominating committee. We wish her well on this journey as she works to further the work of the national elections process.

Missouri State Council Meetings 2010

Friday, November 5, Strategic Planning Session, Joan Eberhardt's (email joaneberhardt@yahoo.com for directions) Osage Beach, Missouri 10:30am

Saturday, November 6, Lake Regional Hospital, Osage Beach, Missouri 10:30am



“Notice a Nurse”

It is the goal of Missouri ENA to notice special Emergency Nurses in each of our newsletters. This recognition is rotated among each of our 6 chapters. If you are interested in recognizing special ER nurses, please contact the chapter president in your area. Contact information may be found on our website at www.missouriENA.org.



Gordon Rogers, RN
Central Missouri Chapter

.Submitted by: Donna Pond RN, BSHA, CEN, Central Chapter President

Central Chapter of the Missouri ENA would like to recognize Gordon Rogers. Gordon has been the back bone of the ENA in our area. We are very happy for him in his new retirement. Travel seems to be the number one item on his bucket list. Gordon served in the United States Air Force for four years and then pursued his nursing career at University of Missouri for 35 years. He and his wife Carol have made their home in Columbia Missouri. Their two children Emma and Ben have left the nest now, but come home often. Below is an excerpt from the University of Missouri newsletter.

Retirement reception planned for Rogers. Employees are invited to honor Gordon Rogers, RN, for 35 years of service at a retirement reception from 1:30 to 3 p.m. Tuesday, Sept. 14, in Main Street Conference Room at University Hospital. Rogers serves as a certified emergency nurse and clinical supervisor in Emergency Services at University Hospital. He has represented University Hospital at the state level and nationally through the Emergency Nurses Association. Staci Walters, RN, assistant manager of Emergency Services at University Hospital, said she is thankful for Rogers’ devotion to the heart of nursing and hopes he knows how greatly he will be missed. “Almost everyone knows Gordon,” said Brenda Jensen, RN, manager of Emergency Services, Dialysis, Transplant and IV Access Nursing. “He has been a resource and problem solver to almost every department in this hospital. His departure is a very bittersweet moment for a lot of us who rely on Gordon. We wish him every great thing that retirement has to offer. The E.R. will not be the same — he is leaving many friends and admirers behind.” Gordon, hasn’t finalized his plan yet, but rest assured he will continue to be active in the ENA and I am counting on him to continue teaching TNCC with his fellow instructors at University and Capital Region.

Combined Clinical Conference **on Emergency Care** **July 26-29, 2011** **Branson, Missouri**

CHAPTER REPORTS

Central Chapter

by Donna Pond, RN, BSHA, CEN

We in the Central Chapter continue to have very active and well attended monthly meetings. An Injury Prevention activity was done at the State Fair. Members talked with families and handed out educational pamphlets. The September meeting was held during the “Emergency Nursing Update”, an educational conference held at the new University of Missouri Women’s and Children’s Hospital. The conference was well attended with 27 nurses from the surrounding area. There were excellent post course evaluations. Thank you to all the wonderful speakers. Our attention is now focused on the Emergency Nurses Day Dinner sponsored by Bristol-Meyers Squibb Sanofi pharmaceutical company. Dr. Aggarwahl from MU will be speaking on Acute Coronary Syndrome. Many have signed up already for the dinner. We are happy to announce that there will be door prizes of text books, gift baskets and gift certificates raffled off. The November meeting will be a strategic planning meeting for the next year, please join us and put in your suggestions. Happy Emergency Nursing Week from your colleagues in the center of the state!



Central Chapter member, Jean Fogerty along with Crescent Chapter members, Sharon Trumbly & Chris Hoag-Apel at General Assembly in San Antonio

Crescent Chapter

by Sharon Trumbly, Secretary

The Crescent Chapter met July 19th and September 27th with good attendance at both meetings. The St. John’s annual Fall Trauma Conference is October 2nd. An update on the conference will be included in the next Crescent Chapter report. Freeman is planning a combined 2-day Pediatric/Trauma conference for fall of 2011. The first day will concentrate on pediatrics and the second day will concentrate on trauma. Elements of both topics will be presented each day. Please give Sharon or Chris your facility’s address and we will make sure brochures are sent when they become available. Please let us know if you have any questions about the conference.

Thirteen students attended the August 26th – 27th CATN class. Participants came from Bartlesville Oklahoma, Ft. Madison, Iowa, Branson, Missouri and the Joplin area. The class was fantastic and the feedback from the participants was great. The participants thought the class was very informative and the instructors did an awesome job presenting difficult material. Another CATN class is planned for next fall. Please let Sharon or Chris know if you would like brochures.

Sharon and Chris had a great time at the ENA 2010 General Assembly with our state colleagues. Much information was learned, many bylaws and resolutions were voted on, and many friendships were formed. We encourage our ENA colleagues to join us next year.

The next ENA Crescent Chapter meeting will be November 15, 2010, 5:00 pm in the cafeteria at St. John’s Regional Medical Center in Joplin. Election of 2011 officers will be held during the November meeting.